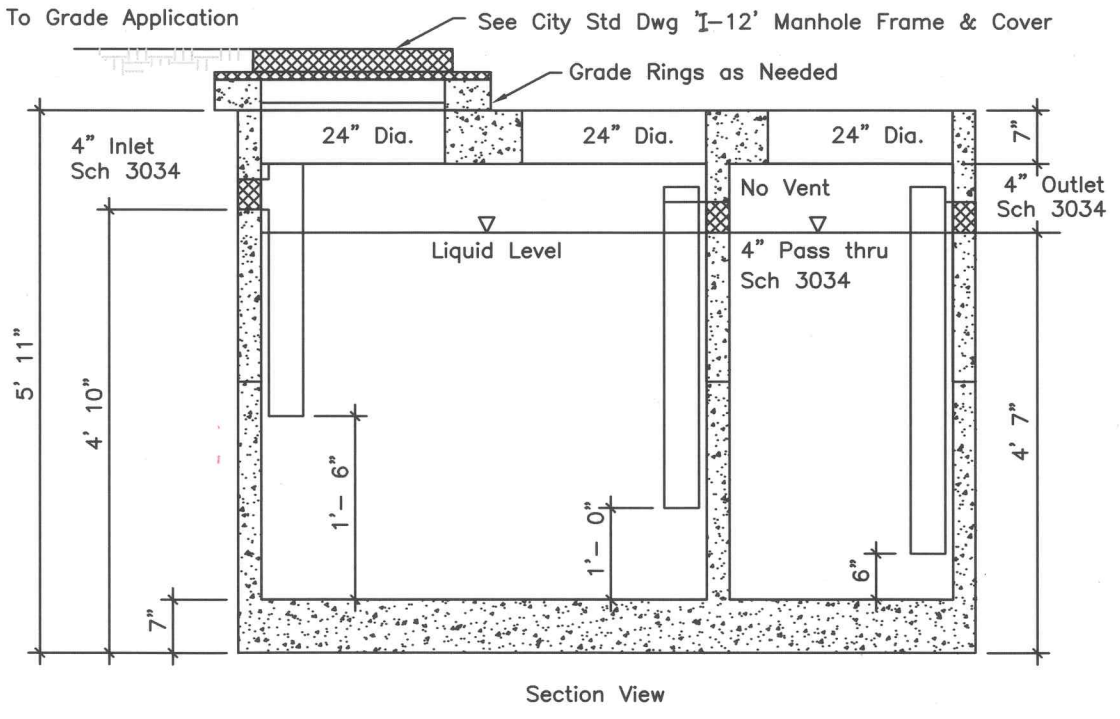


Plan View

TYPICAL:

To Grade Application



Section View

Reinforcing:  
 #4 Bars @ 12" O.C. Lengthwise. in Top  
 #5 Bars @ 9" O.C. Widthwise in Top  
 6x6 10 Ga. Wire Mesh in Sides & Bottom  
 (WILBERT PRECAST PRODUCT #1627 S/OW  
 - 1653TB - HEAVY LOAD OPTION OR  
 APPROVED EQUIVALENT)

<b>CITY OF LEWISTON, IDAHO          PUBLIC WORKS DEPARTMENT</b>	
<b>1000 GALLON          SAND OIL/WATER          SEPARATOR</b>	
APPROVED FOR PUBLICATION <i>Glenn Stebbins</i> 6/2/10 City Engineer	DWG. NO. <b>I-2</b>
Date	