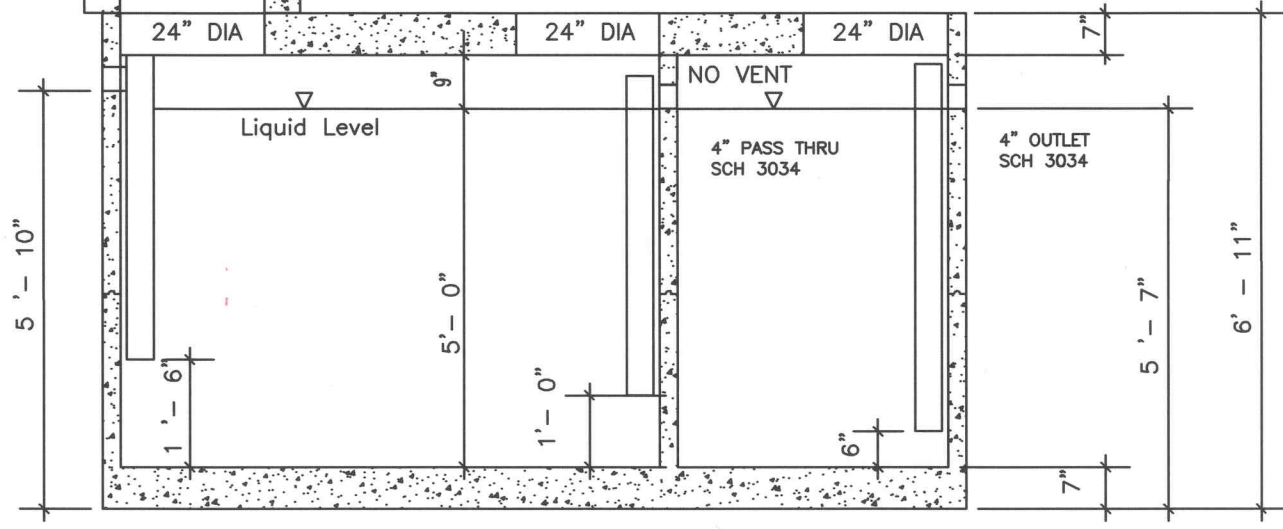


PLAN VIEW

TYPICAL:

To Grade Application See City Std Dwg I-12' Manhole Frame & Cover

Grade Rings as Needed



SECTION VIEW

NOTES:

1. 2-PIECE CONSTRUCTION WITH BUTYL TAPE SEAL @ JOINT
2. REINFORCEMENT:  
TOP AND BOTTOM: #4 @ 4" O.C.E.W.  
SIDES: #4 @ 4" O.C.E.W.
3. SUITABLE FOR TRAFFIC SITUATIONS

(WILBERT PRECAST PRODUCT # 1641 S/OW - 1654TB - HEAVY LOAD OPTION OR APPROVED EQUIVALENT)

<b>CITY OF LEWISTON, IDAHO PUBLIC WORKS DEPARTMENT</b>	
<b>2500 GALLON SAND OIL/WATER SEPARATOR</b>	
APPROVED FOR PUBLICATION <i>Shawn Stubbs</i> 6/2/10 City Engineer	DWG. NO. <b>I-8</b>
Date	